

OPERATING INSTRUCTION

No. 2115 e

STEAM STERILIZER
WEBECO-AUTOMAT V

table unit, with water jet suction pump,
combined heated, electrically or steam on site

(D.14) BA.2115E

TECHNICAL DATA:

Manufacturer : WEBECO GmbH, Mühlenstrasse 38,
W-2407 Bad Schwartau

User : Haydom Lutheran Hospital
Mbulu - Tanzania

Year of delivery : 1991

Fabric.-number : 85 960 / 85 961

Designation : AUTOMAT V - table unit
electrically or steam heated

Nominal size : H x W x D = 3 x 3 x 6

Capacity : 115 l

Service space : 320 x 320 x 610 mms

Service excess
pressure : 2.5 / - 1.0 bar vacuum

Steril.temperature : 120° C / 134° C

Rated voltage : 220/380 V

Type of current : three-phase-current

Tated frequency : 50 Hz

Power input : 9.100 W

Protection class : IP 33

Any changes of the steam sterilizer require the manufacturer's approval and confirmation and must be entered in the data sheet.

(D.14)BA2115E.1

GENERAL REMARKS

The steam sterilizer must not be operated by any person unless he has been familiarized with the operating instructions and trained to use the sterilizer.

The responsibility for an adequate training of the operating personnel lies with the user.

The steam sterilizer must not be used after a defect has occurred through which the operating personnel or any third party may endanger the successful sterilization.

The shift change-over of the operating personnel must not take place unless the person taking turns has properly taken over the unit and has been informed of any particularities, troubles, defects and the corresponding measures already taken.

It is necessary to keep an equipment record book where the daily reports are entered, for example batch documentation, tests, checks, maintenance and repair work.

If the sterilizer is not in use for a longer period (for example approx. 8 weeks), the unit must be properly shut down and secured against damage, such as corrosion, drying out of seals, jamming of pistons.

Steam sterilizers must be operated according to regulations in order to secure their function and the necessary work safety.

It must be ensured, therefor, that the selectable sterilizing programmes are used for the respective sterilizing material as laid down in these operating instructions.

TECHNICAL DESCRIPTION - EQUIPMENT SETUP

I. Installation of unit

At installation site, the following must be provided by the customer:

For operation of the water jet pump a water supply NW 20 equipped with an angle valve having a connection of R 3/4" and a drainage with a diameter of 1½" - 2" for the waste water of same. The sterilizer must be connected to the angle valve provided by the customer.

For reliable operation of the water jet pump, a constant flow pressure of 2.5 - 3 atm. abs. is required.

For steam supply on site a steam pipe of 1/2" with a pressure of 3 - 3.5 atm. abs. has to be provided.

II. Description of unit

AUTOMAT V provides a capacity space of 32 x 32 x 61 cms.

The chamber in single-walled construction made of chrome-nickel-steel is approved for a maximum operating pressure of 2.5 atm. abs. and is subject to a construction and water pressure test by the German Technical Authorities (TÜV). The temperature prevailing in the chamber is indicated by the remote thermometer. The positive and negative pressure in the chamber can be controlled at the vacuum gauge, the temperature with a tele-thermometer.

The red drag pointer at the vacuum-manometer has to be turned to the left down to zero before each sterilizing cycle. After sterilization this pointer leaves at the highest reached pressure and allows a supervision, if the requisite operating pressure has been reached.

Mains supply

The rate of consumption of the unit is 9.000 W with 220/380 V three-phase-current. Each phase is fused with 16 amperes having a wire-cross-section of 2.5 mm² per phase.

The unit has 2 pressure regulator for controlling the sterilizing temperature. One is fixed on 2.2 bar and regulates the sterilizing temperature at 134° C, the other one is fixed on 1.1 bar for sterilization at 121° C.

Technical description for operation with electrically immersion heating

The steam which is needed for sterilization is generated by immersion heaters in the lower section of the boiler. Before each sterilization the boiler must be filled with abt. 7 litres of feeding water by means of the button "feeding" in the front of the unit.

When doing this open the door to compare if the water level reaches the filling mark!

If there is, by some reason, no feeding water in the boiler, the overheating protection switches off the heating element and the controlling voltage. The re-engaging (switching-on again) is only possible by dismounting the right side-casing by pressing the green button at the overheating protection switch.

Attention! This re-engaging should only be made by a technician who is familiarized with the unit.

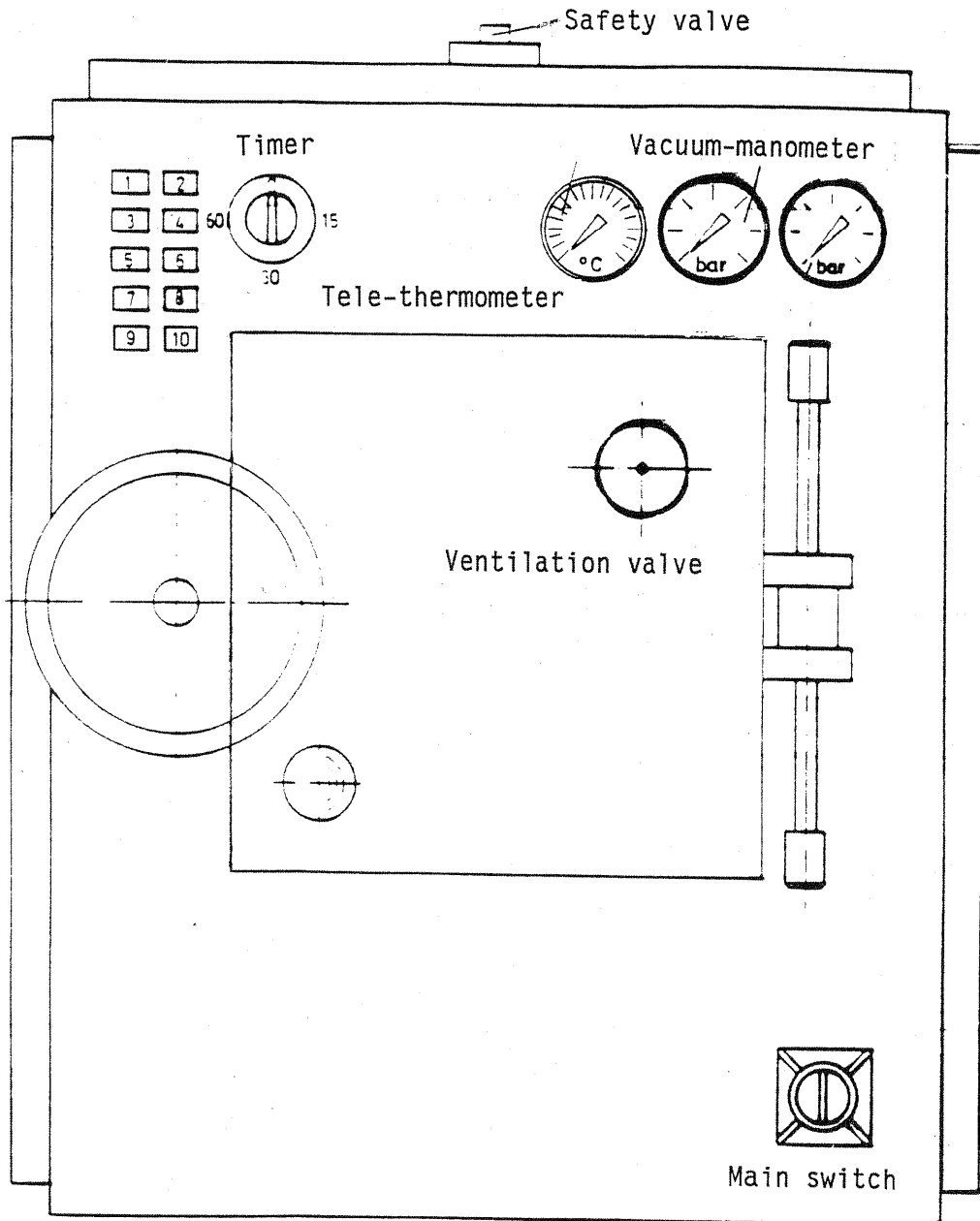
A second overheating protection is under the boiler. This is an additional protection and switches-off the heating from current for power.

The water jet pump sucks-off the air from the sterilizing goods before sterilization takes place and generates the post-vacuum for the drying phase after the sterilization. The sucking-off takes place simultaneously with the heating up before the sterilization starts.

(D.14) BA2115E.4

WEBECO STERILIZER

AUTOMAT V - Table unit



- | | | | | | |
|---|---|---------|----|---|---------------|
| 1 | - | 134° C | 2 | - | 121° C |
| 3 | - | Start | 4 | - | Feeding |
| 5 | - | | 6 | - | Vacuum |
| 7 | - | End | 8 | - | Vacuum-drying |
| 9 | - | E-Steam | 10 | - | |

Control - and indication elements

- Main switch - By turning from "0" to "I" the current will be switched on.
- Button 1 - "134° C" - Symbol sterilizing box, program selection for 134° C - Sterilization.
- Button 2 - "121° C" - Symbol gloves, program selection for 121° C - sterilization.
- Button 3 - "Start"
After closing the door and choosing the time, the program (1 or 2) will be started by pressing this button.
- Button 4 - "Feeding" (Sterilization with E-steam)
Before loading the chamber the chamber has to be filled up to the water level mark. Therefor this button has to be pressed constantly while filling process.
If there is no feeding water connection on site, the water has to be filled in manually.
- Button 6 - "Vacuum" - for faster pre-vacuum cycle
By pressing the button the water jet pump will be started.
- Button 7 - "End"
Program-end indication - after lighting on of the lamp the sterilizer can be disloaded.
- Button 8 - "Vacuum-drying" - indication
The goods will be dried after sterilization.
Therefor a solenoid valve which connets the lowest point of the chamber with the water jet pump is opened.
First the resistant water, then the humidity in the goods will be evacuated.
- Button 9 - "E-Steam"
Button for changing from steam pipe to electrically heater.
- Timer By turning the grip to the right the sterilizing time can be choosen. The time is just started after reaching the sterilizing temperature of 134° C / 121° C.
The timer must be fixed before pressing the button "On".
- Tele-thermometer This instrument indicates the temperatur in the chamber.
- Vacuum-manometer For indication of pressure in the chamber.
- Manometer (not shown in the drawing)
Indication of steam pressure, generated on site.
- Safety valve This valve is regulated at 2.5 bar. For reliability of this valve it should be lifted every 2 weeks by turning to the left.
Attention: Valve could be hot!

INSTRUCTION FOR USE

WEBECO - AUTOMAT V
electrically heated

1. Set "Main-switch" from "0" to "I".
2. Fill in distilled water:
Press push-button 4 "Feeding" as long as the water has attained the mark on the ground orifice at the bottom plate or fill in manually 7 litres at the open door through the filling orifice into the chamber.
3. Close filling orifice (absolutely necessary!)
Charge the sterilizer and shut the door.
4. Set timer:
For the sterilization of instruments = 10 min.
textile fabrics = 15 min.
rubber parts = 20 min.
5. Press program-button (1) or (2):
For the sterilization of instruments and textiles 134° C
rubber parts 121° C
6. If a drag pointer is built into a manometer turn it back down to zero.
7. Press the "Start"-button (3).
8. Press "Vacuum"-button (6).
Now the operation is started.

The air from the chamber is sucked off via the flow nozzle and the pressure decreases. Afterwards the steam power effects an overpressure of abt. 1 bar. Then a second pre-vacuum cycle follows. In abt. 15 min. the air will be evacuated from chamber and out of the goods. After second pre-vacuum the heater is activated for reaching the choosen steam-pressure.

At sterilization of porous loading as textile fabrics, the vacuum pump runs the whole steril. time. When the time (fixed at the timer) is finished, the lamp "Vacuum-drying" lights up.

If the "Vacuum"-button (6) has been switched-off it now will be switched-on automatically and lamp lights up.

The pressure in the chamber and the water jet pump both press the rest-water out of the chamber and the drying-cycle starts (abt. 12 min. drying-time).

9. After finishing drying time the button "End" (7) lights up.
10. If the "Vacuum"-button at textile-sterilization has been pushed, it must be pushed off now.
11. Open the ventilation valve at the door.
After pressure increase up to "0" bar, indicated at the vacuum-manometer the door can be opened.

INSTRUCTION FOR USE

WEBECO - AUTOMAT V
with steam on site

1. Set "Main-switch" from "0" to "I".
2. Charge the sterilizer and close the door steamtight.
3. Set timer:
For sterilization of instruments : 10 min.
 textile fabrics : 15 min.
 rubber parts : 20 min.
4. Press program-button (1) or (2).
5. Turn back red drag pointer at vacuum-manometer down to "0" bar.
6. Press the "Start"-button (3).
7. Press "Vacuum"-button (6).
Now the operation is started.

At first the pressure decreases, controlled by time, effected by the water jet pump. This vacuum will be held until the time of 6 min. goes out. The following pressure increase is setted at 1.1 bar. Again a second vacuum step will be started and holds 6 min.

8. Afterwards the sterilizing cycle is started and controlled by the time set at the timer.
When the time is finished, the lamp "Vacuum-drying" lights up.
If the "Vacuum"-button (6) has been switched-off, it now will be switched-on automatically and lamp lights up.
The pressure in the chamber and the water jet pump both press the rest-water out of the chamber and the drying cycle starts. (abt. 12 min. drying-time)
9. After finishing drying time the button "End" (7) lights up.
10. If the "Vacuum"-button at textile-sterilization has been pushed, it must be pushed-off now.
11. Open the ventilation valve at the door.
After pressure increase up to "0" bar, indicated at the vacuum-manometer, the door can be opened.

(D.14) BA2115E.7

Maintenance

1. For the means of maintenance and care the unit has to be thoroughly cleaned and rinsed. Afterwards the cleaning water must be sucked off by means of the water jet pump.

Main switch "I".

Set timer for abt. 5 min.

Press button "E-Steam" and "Start".

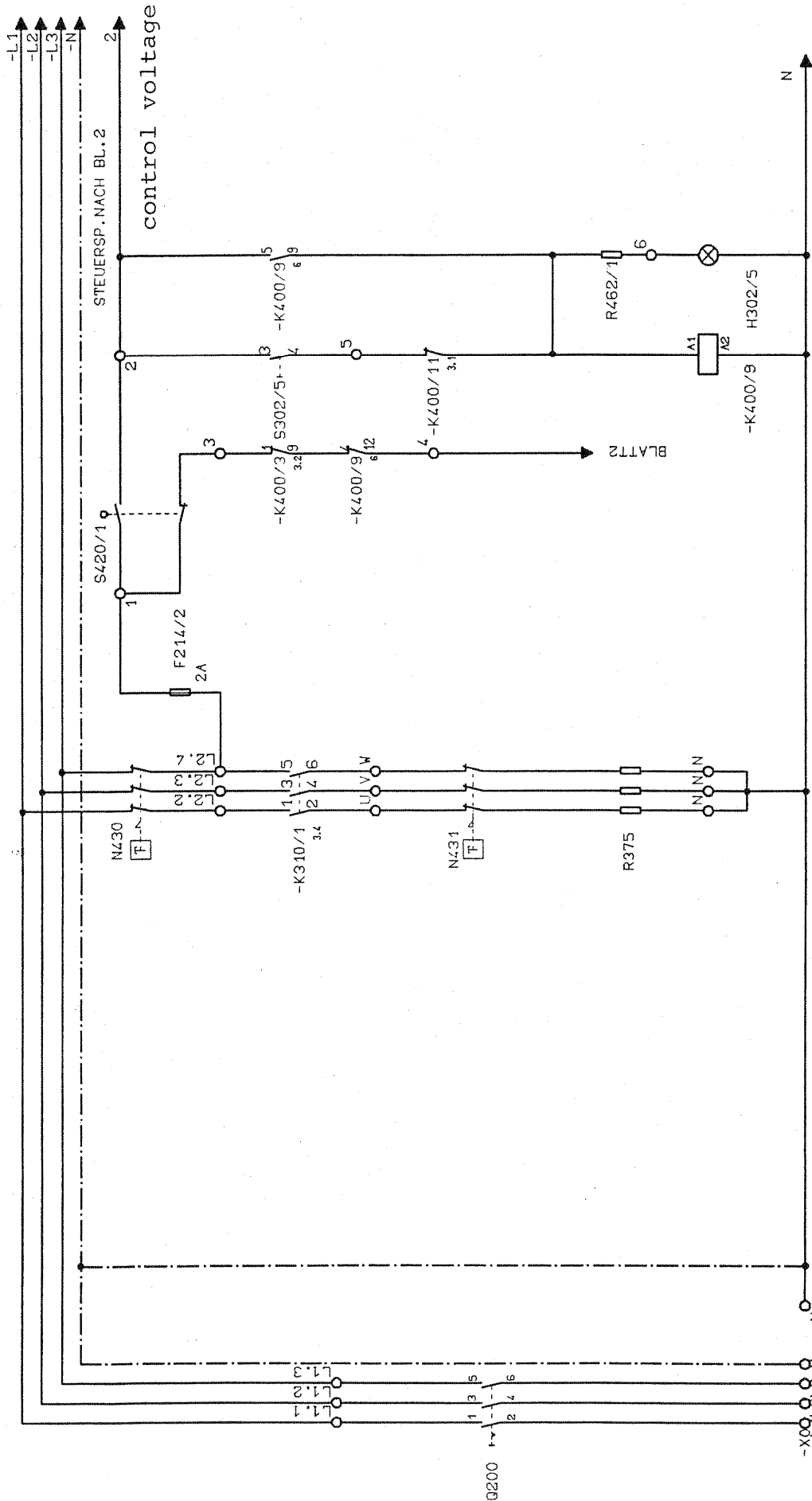
Then turn back timer to zero.

After approx. 12 min. (sucking off water) the signal lamp "End" (7) lights up.

Open the ventilation valve and open door at indication "0" at vacuum-manometer.

2. Attention must be paid that both "Dirt traps" of the unit are cleaned at regular intervals. These dirt traps are arranged in the water supply piping of the water jet pump and in the vacuum suction piping.
3. In the case of leakages caused by reduced elasticity of the packing, either the door must be re-tightened or the packing replaced. When re-tightening, the hinge axle must be removed. For this purpose, loosen the screws of the axle caps. With a new door packing, turn the axle nut to the left for loosening and to the right for re-tightening.
4. From time to time all threaded parts and the hinge axle must be greased. Use grease free from acid.
5. Malfunctions:
If the unit will not operate after setting the timer and pressing the "Start"-button proof the following:
 - a) Electrical installation (fuses a.s.o.)?
 - b) Water jet pump working?
requisite water flow pressure at least 2.5 bar!
 - c) Is the door closed steamtight?
 - d) If the sterilizing pressure will not be reached, although right handling, proof at E-steam-operation if enough water has been filled in.
Or if steam-on site is used if the house-steam pressure is o.k.

(D.14)BA2115E.8



5 1 9 7
 1 1 1 1 1 1
 6 7 1 1 1 1 1 1
 2 1 1 1 1 1 1 1
 7 1 1 1 1 1 1 1
 3 1 1 1 1 1 1 1
 8 1 1 1 1 1 1 1
 4 1 1 1 1 1 1 1

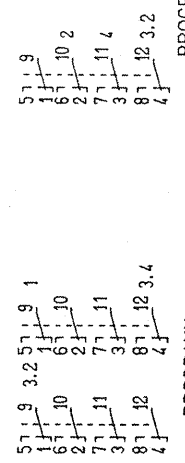
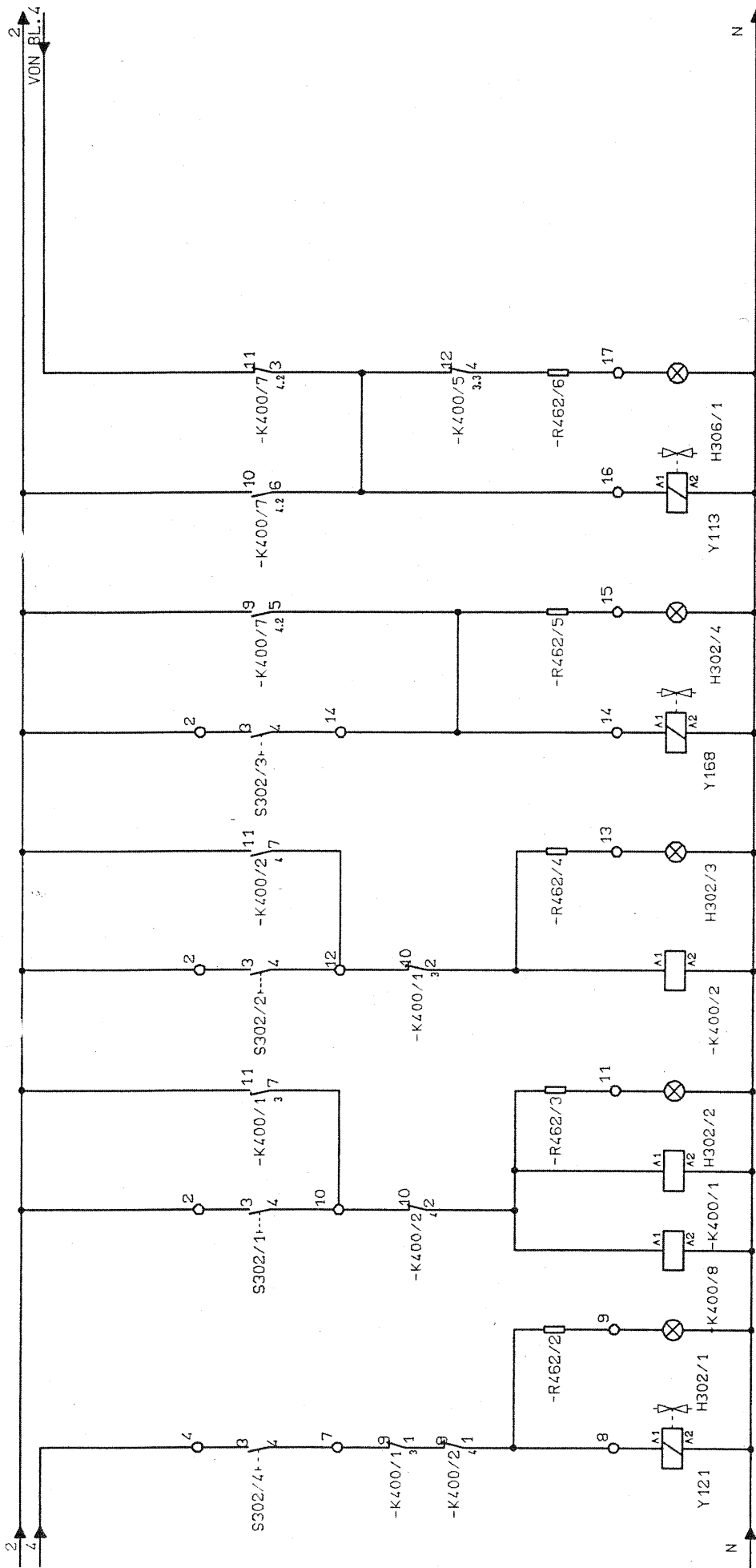
UMSCHALT.
 AUF
 E-DAIMP

Combination
 switch for
 E-steam

Heating
 HIZUNG
 3x3000W/220V

EINSPEISUNG 380V/50Hz
 Mains supply

1	2	3	4	5	6	7	8				
Datum 15.05.91 Bearb. SEEL 15.05.91 Zusl. Änderung				Projekt +AV_TISCH4 Ers.f				Zeich.Nr. 1 1120 0945 = AV-TISCH4 + SCHRANK			
Datum Name Norm				Datum Name Norm				Blatt: 1			
Datum 15.05.91 Bearb. SEEL 15.05.91 Zusl. Änderung				Projekt +AV_TISCH4 Ers.f				Zeich.Nr. 1 1120 0945 = AV-TISCH4 + SCHRANK			
Datum Name Norm				Datum Name Norm				Blatt: 1			
Datum 15.05.91 Bearb. SEEL 15.05.91 Zusl. Änderung				Projekt +AV_TISCH4 Ers.f				Zeich.Nr. 1 1120 0945 = AV-TISCH4 + SCHRANK			
Datum Name Norm				Datum Name Norm				Blatt: 1			
Datum 15.05.91 Bearb. SEEL 15.05.91 Zusl. Änderung				Projekt +AV_TISCH4 Ers.f				Zeich.Nr. 1 1120 0945 = AV-TISCH4 + SCHRANK			
Datum Name Norm				Datum Name Norm				Blatt: 1			
Datum 15.05.91 Bearb. SEEL 15.05.91 Zusl. Änderung				Projekt +AV_TISCH4 Ers.f				Zeich.Nr. 1 1120 0945 = AV-TISCH4 + SCHRANK			
Datum Name Norm				Datum Name Norm				Blatt: 1			



MV KAM.SPEISEN
solenoid valve
feeding 1

PROGRAMM
134 GRD

PROGRAMM
120 GRD

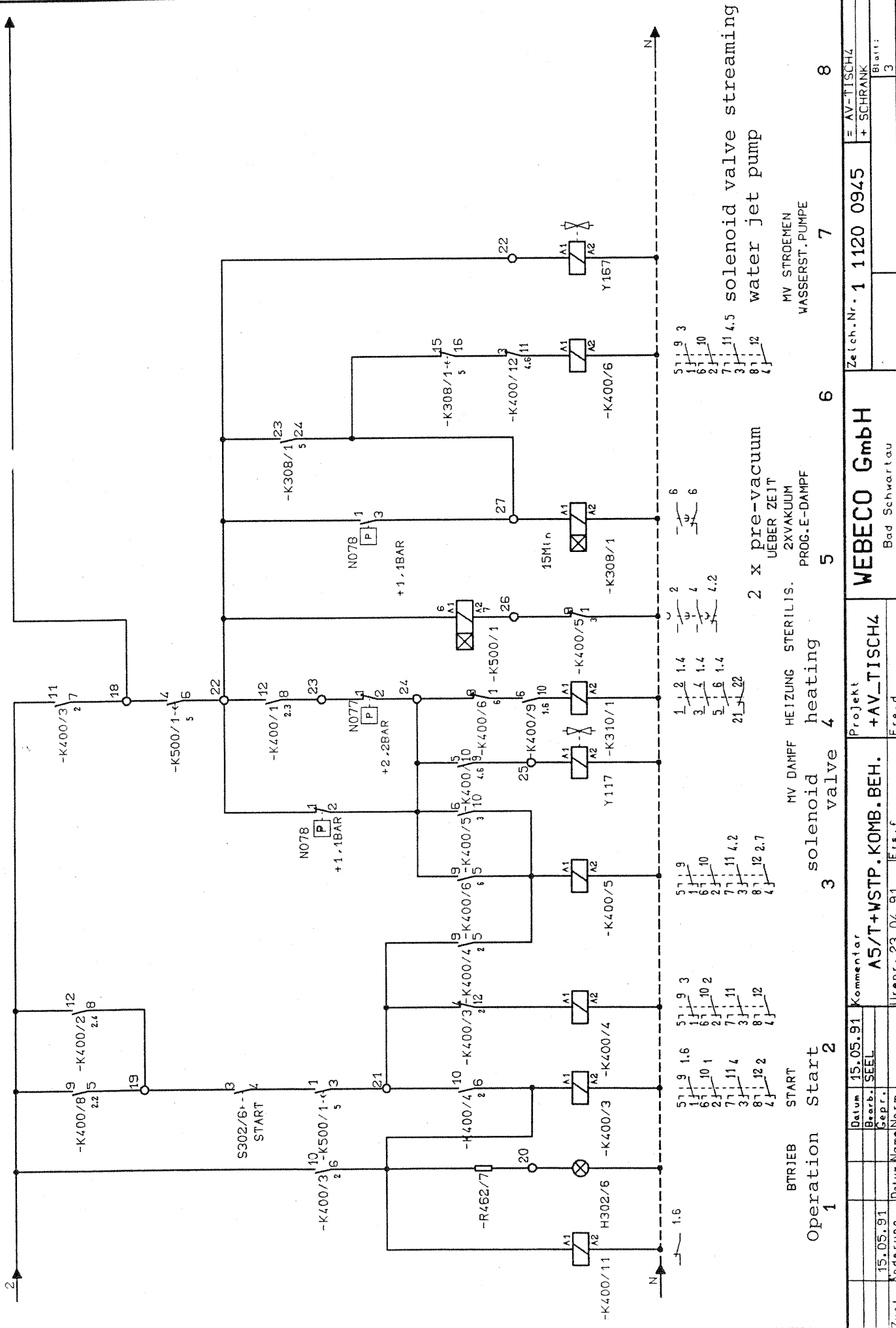
PROGRAMM
112 3.2

MV WASSER
STRAHLP.
solenoid valve
water jet pump 5

MV VAKUUM
solenoid valve
vacuum 6

1	2	3	4	5	6	7	8
---	---	---	---	---	---	---	---

Datum 15.05.91		Kommentar		Zeich.Nr. 1 1120 0945		= AV-TISCHZ + SCHRANK	
Bearb. SEEL		A5/T+WSTP.KOMB.BEH.		WEBECO GmbH		Bad Schwartau	
15.05.91		Ers.f		Ers.d		Blatt: 2	
Zusl. Änderung		Datum Name Norm		Uepr. 23.04.91		Blatt: 2	



1.6
 5 7 9 1.6
 1 1 10 1
 6 1 10 2
 2 1 10
 7 1 11 4
 3 1 11 11
 8 1 12 2
 4 1 12 2.7

2 x pre-vacuum
 UEBER ZEIT
 2XVAKUUM
 PROG.-E-DAMPF

3 solenoid valve heating
 MV DAMPF HEIZUNG STERILIS.

4

5
 15Mn
 +1.1BAR
 N078
 1 3
 27

6
 1 2 1.4
 3 1 1.4
 5 1 1.4
 21 22

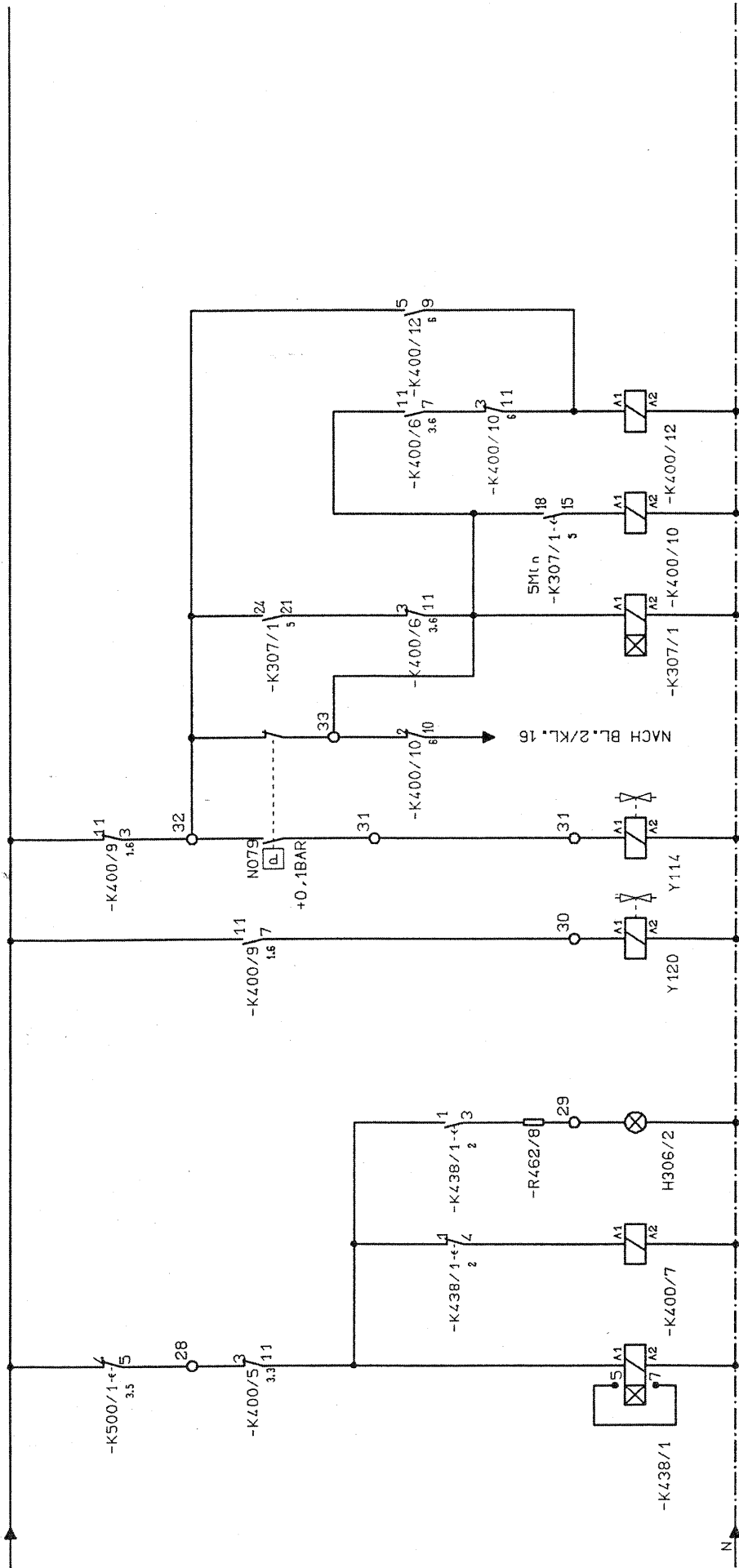
7
 MV STROEMEN
 WASSERST.-PUMPE

8
 5 7 9 3
 1 1 10
 2 1 10
 7 1 11 4.5
 3 1 11 12
 8 1 12 2

11 4.5 solenoid valve streaming
 water jet pump

Projekt		Zeich.-Nr. 1 1120 0945		= AV-TISCH4 + SCHRANK	
Ers.d		Ers.f		Blatt: 3	
Kommentar		AS/T+WSTP.KOMB.BEH.		WEBECO GmbH Bad Schwartau	
Datum 15.05.91		Ers.f		Ers.d	
Bearb. SEEL		Ers.f		Ers.d	
15.05.91		Ers.f		Ers.d	
Zusl. Änderung		Datum Name Norm		Ers.f	

VON KL. 18



vacuum drying
 VAKUUM
 TROCKNEN
 15Mtn

solenoid valve
 streaming
 MV STROEMEN
 E-DAMPF H-DAMPF
 steam on site

time pre-vacuum
 at steam on site

3
 5 7 9 2.5
 1 10 2.6
 2 11 2.7
 3 12

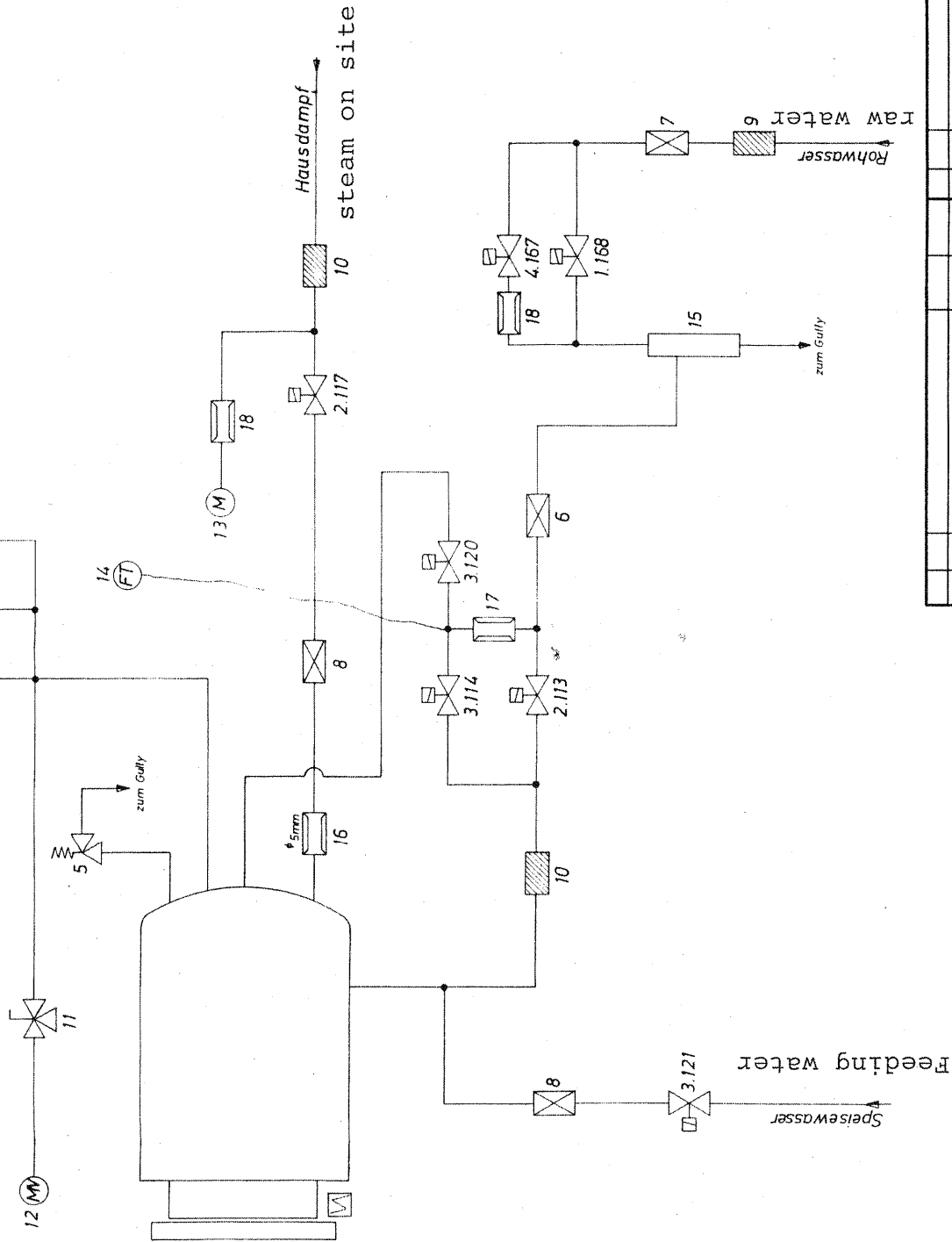
24 1 21 5
 1 9 3.4
 2 10 5
 3 11 6
 4 12

end
 ENDE

1 2 3 4 5 6 7 8

Datum 15.05.91		Kommentar		Zeich.-Nr. 1 1120 0945		= AV-TISCH4 + SCHRANK	
Bearb. SEEL							
Sep.r.							
Urspr. 23.04.91		Ere.f				Blatt: 4	
A5/T+WSTP.KOMB.BEH. +AV_TISCH4				WEBECO GmbH			
Projekt				Bod Schwartzau			

19.077 19.078 20.079



Buchstabe Anmerkung	Tag	Name	Änderung	Tag	Name
91					
Stab	17.5.	Ahr			
Rechen					
Reparat					
Wartung					
Reparat					
Webeco			Ersatz für		
Webeco GmbH Bad Schw.			Ersatz d		
Maßstab			zu:		
Rohrplan AV Tisch			Zeichnungs-Nr		
kombiniert beheizt			11120 0934		

Piping diagram

POS+F	TEILE-NR.	VAR	MENGE/MA	BENENNUNG	/WERKSTOFF	Z-NR.	-F	/LAGER	AEND
-	1 1120 0934	-00	1,000	ROHRPLAN AV TISCH		1			3
			STK	KOMBINIERT BEHEIZT		000000			0007
001-0	5 0132 5233	-00	1,000	MV-BUERK=281-A=20-B=3/4-2					
00		000	STK	20/50		000000			0006
002-0	5 0130 2131	-00	2,000	MV-BUERK=190-A=13-A=1/2-					
00		000	STK	22050		000000			0006
003-0	5 0130 6631	-00	3,000	MV-BUERK=206-A=6-F=1/4-					
00		000	STK	22050 SH. 5 0131 0631		000000			0006
004-0	5 0120 4131	-00	1,000	MV I129-D1=1/4"3-Z224-220					
00		000	STK	50 2/2 WEGE 1400 D.DUTRAL		000000			0006
005-0	5 0514 1525	-00	1,000	SICH-V-GOE-ARN-851-T-G1/2					
00		000	STK	-2.5-		000000			0006
006-0	1 1112 9960	-00	1,000	KUGELRUECKSCHLAGVENTIL		12996-0-1			4
00		000	STK	ball check valve		000000			0006
007-0	5 1011 0020	-00	1,000	RS-VENT=ARNOLD=MS-8/17170					
00		000	STK	=G3/4		000000			0006
008-0	5 1011 0015	-00	2,000	RS-VENT=ARNOLD=MS-8/17170					
00		000	STK	=G1/2		000000			0006
009-0	5 1510 0020	-00	1,000	SCHMUTZFANGER Ø 3/4					
00		000	STK	VA SIEB		000000			0006
010-0	5 1511 0015	-00	2,000	SCHMUTZF-MEROSE=8180.0400					
00		000	STK	=G1/2		000000			0006
011-0	5 1224 0015	-00	1,000	MANO=HA=ARNOLD=MS-5/817					
00		000	STK	=G1/2		000000			0006
012-0	5 1826 3143	-00	1,000	VAKUMAN-OTA-63-1-4-BSZ-RD					
00		000	STK	T-2.5 SH 5 1816 3143		000000			0006
013-0	5 1826 3045	-00	1,000	MANOM-OTA-D63-0-4-B-ROT-2					
00		000	STK	.7-3		000000			0006
014-0	5 1922 6160	-00	1,000	FERNTHERMOMET. 8201-21-60					
00		000	STK	0-160°C U. BMR. 8200 1524		000000			0006
015-0	1 1106 4671	-00	1,000	WASSERSTRAHLPUMPE 3F. F/L		06467-1-1			water jet pump
00		000	STK	KPL		000000			0006
016-0	2 0100 0211	-00	1,000	DOPPELNIPPEL		D/L 00021-1-2			double hipple
00		000	STK	M858 6KT 27X38 1/2X3/8 AK		000000			0006
017-0	5 2211 2000	-00	1,000	MECO-DUESE=GR-200-NR-4652					
00		000	STK			000000			0006
018-0	5 2211 1500	-00	2,000	MECO-DUESE=GR-150-NR-4652					
00		000	STK			000000			0007
019-0	6 6408 0003	-00	2,000	DRUCKSCHALTER FEMA.DCM3					
00		000	STK	46560		000000			0007
STL-NR.:	1 1120 0934	00		DATUM: 21.05.91		BEARB: RA			BLATT: 01/02

POS-NR	TEILE-NR.	VAR	MENGE/MA	BENENNUNG	/WERKSTOFF Z-NR.	LAGER	AEND
1	1120 0934	00	1.000	ROHRPLAN AV TISCH STK KOMBINIERT BEHEIZT	1 000000	3 0007	
020-0 00	6 6408 0111	00	1.000	VAKUUMSCHALTER VCM 111 STK 46715	vacuum switch 000000		0007

Wiring diagram

POS-F	TEILE-NR.	-VAR	MENGE/MA	BENENNUNG	/WERKSTOFF	Z-NR.	-F	/LAGER	AEND	
-	1 1120 0945	-00	1,000	E-PLAN AS/7+MSTP NACHVAK.					2	
				STK KOMBIN.BEH.H-DAMPF/E-DAMP		000000			0006	
200-0	6 5401 2011	-00	1,000	SCHALTER NOT-AUS						
00			000	STK D17 A292/D-A046 E6		000000			0003	
									switch emergency-off	
214-0	6 4252 4892	-00	1,000	WEIDM-KLEMME-SAK53-2409.2						
00			000	STK		000000			0003	
									clamp	
229-0	2 0116 8420	-00	1,000	PLATTE		16042-0-2			plate 4	
00			000	STK AL99.5 HH DL 2X171X377		000000			0003	
237-0	6 4252 7962	-00	12,000	WEIDM-KLEMME-SAK-2,5KRG						
00			000	STK 2796.2		000000			0003	
									clamp	
238-0	6 4252 7967	-00	10,000	WEIDM-KLEMME-SAK2,5KRG-27					ditto	
00			000	STK 96.7		000000			0003	
239-0	6 4254 3046	-00	16,000	KLEMME BK40 5900.6					ditto	
00			000	STK		000000			0003	
240-0	6 4254 3048	-00	5,000	KLEMME BK40 5900.8					ditto	
00			000	STK		000000			0003	
247-0	6 4253 0750	-00	3,000	WEIDM-TRENNWAND-TW-HF					seperation wall	
00			000	STK 3075.0		000000			0003	
248-0	6 4253 2810	-00	2,000	WEIDM-QUERVERBIND-3681.0					cross connection	
00			000	STK		000000			0003	
260-0	6 4251 2286	-00	0,200	TRAGSCHIENE -T632					clamp rail	
00			000	M 1226.0		000000			0003	
261-0	6 4257 8340	-00	0,165	WEIDM-TRAGSCHIENE-T635					ditto	
00			000	M 3824.0		000000			0003	
271-0	6 3103 0016	-00	1,000	GEGENMUTTER P6L6					counter nut	
00			000	STK ISO GRAU		000000			0006	
275-0	6 4252 2450	-00	1,000	WEIDM-SICHERUNG-2A-2945.0					fuse	
00			000	STK		000000			0003	
281-0	6 4307 0011	-00	8,000	GLUEHLAMPE 300-6000					glow-lamp	
00			000	STK MCT 1 3/4		000000			0004	
282-0	6 4309 0008	-00	28,000	FLACHSTECKHUELSEN					flat socket	
00			000	STK 300-0008		000000			0003	
283-0	6 4309 0009	-00	30,000	ISOLIERHUELSE 300-0009					insulating socket	
00			000	STK		000000			0003	
284-0	6 4309 0007	-00	2,000	DOPPELSTECKHUELSTEN					double sockets	
00			000	STK 300-0007		000000			0003	
285-0	6 2301 2007	-00	2,000	KABEL YSLY-JZ 20X0,75					cable	
00			000	M (DELFLX)		000000			0003	
286-0	6 2303 0515	-00	2,250	KABEL YSLY-JZ 5X1,5					ditto	
00			000	M (DELFLX)		000000			0003	
STL-NR.:	1 1120 0945	00		DATUM:	15.05.91	BEARN:	SE		BLATT:	01/02

POS-NR	TEILE-NR.	MENGE/MA	BENENNUNG	/WERKSTOFF Z-NR.	-F /LAGER AEND
1	1120 0945	-00	1,000 E-PLAN A5/T4WSTP NACHUAK. STK KOMBIN.BEH.H-DAMPF/E-DAMPF 000000		2 0006
287	0 2704 0256	-00	2,500 VERDRAHTUNGSLEITUNG wiring 00 000 M H07V-K 2,5 GRUEN/GELB 000000		0003
288	0 2301 0307	-00	11,000 KADEL YSLY-JZ 3X0,75 cable 00 000 M (DELFLX) 000000		0003
302	0 4302 0001	-00	6,000 DRUCKTASTSCHALTER-MOTOCO push-button 00 000 STK 901-6 000000		0003
303	0 4303 5601	-00	6,000 KALOTTE WEISS 200-5601 cap (white) 00 000 STK 000000		0004
305	0 4304 0001	-00	2,000 SIGNALLEUCHTE 700-6 signal lamp 00 000 STK 000000		0003
307	0 5909 3161	-00	1,000 CROUZET-REL-00225.0-12M-2 relay 00 000 STK 20-50 000000		0004
308	0 5909 3361	-00	1,000 CROUZET-REL-00225.0-12M-2 ditto 00 000 STK 20-50 000000		0003
312	0 4303 5301	-00	1,000 KALOTTE GELB 200-5301 cap (yellow) 00 000 STK 000000		0004
313	0 4303 5401	-00	1,000 KALOTTE GRUEN 200-5401 cap (green) 00 000 STK 000000		0003
375	0 0209 3301	-00	3,000 ROHRHEIZG. VA 220V 3000W heating element 00 000 STK A5 000000		0003
391	0 4254 7436	-00	7,000 WEIDM-KLEMM-CK2,5N-508 clamp 00 000 STK 4743.6 000000		0003
400	0 5907 0361	-00	12,000 RELAIS 111A4 220V5 relay 00 000 STK 000000		0006
401	0 5910 0602	-00	12,000 JZUMI-SOCKEL-SY4S-05-U socket 00 000 STK 000000		0006
403	0 6101 6061	-00	1,000 FANAL-SCHUETZ-6-01-220-50 contactor 00 000 STK 000000		0006
420	0 5502 0603	-00	1,000 ENDSCHALTER BAUMER final switch 00 000 STK TYP 602 YNI 603 SI-MEMBRA 000000		0004
430	0 6205 1544	-00	1,000 TEMPERATURBEGRENZER temperature regulator 00 000 STK EMFF-544 53/8X5301D4X125 000000		0003
431	0 6201 7553	-00	1,000 EBERLE-REGLER-755.003 regulator 00 000 STK 000000		0003
438	0 5914 1061	-00	1,000 ZEITRELAIS MEAZ 220/50 time relay 00 000 STK 0.2-1000SEK 000000		0003
462	0 4310 0040	-00	8,000 VORSCHALTWIDERSTAND resistance 00 000 STK 300-0040 220/60V 0,2KD/4W 000000		0004

STL-NR.: 1 120 0945 00 DATUM: 15.05.91 BEAPB: SE BLATT: 02/03

POS-NR	TEILE-NR.	VAR	MENGE/MA	BENENNUNG	/WERKSTOFF Z-NR.	W	LAGER	AEND
-	1 1120 0945	-00	1,000	E-PLAN A5/T+WSTP NACHVAK. STK KOMBIN.BEV.H-DAMPF/E-DAMP	000000			2 0006
500-0	6 5204 0243	-00	1,000	SCHALTUMR ABLAUF-SPERRE 000 STK 60MIN 16263-050		timer		0003
548-0	6 2701 0071	-00	30,000	VERDRÄHTUNGSLEITUNG 000 M H05V-K 0,75 SCHWARZ		wiring		0003
549-0	6 2701 0073	-00	2,000	VERDRÄHTUNGSLEITUNG 000 M H05V-K 0,75 BLAU		ditto		0003
556-0	6 4105 0075	-00	250,000	ADERENHULSEN 0,75 ISOLI. 000 STK		-		0003
557-0	6 4105 0150	-00	30,000	ADERENHULSEN-1,5 000 STK NR.550206		-		0003
572-0	6 3401 0025	-00	14,000	KABELBINDER 200X4,8 000 STK TYP 25/M		cable fixer		0003
600-0	D0084M8X30	-00	2,000	SCHRAUBE DIN 84 MS M8X30 000 STK FÜR ERDUNG		screw		0003
601-0	D0934M8	-00	4,000	MUTTER DIN 934 MS M8 000 STK FÜR ERDUNG		nut		0003
602-0	2 1101 8000	-00	2,000	U-PLÄTTCHEN S-160 000 STK 1.4301 BL.1,25X16X24	F/L S-160	plate		4 0003
603-0	D0127R8A	-00	2,000	FEDERRING DIN 127 A2 8 A 000 STK		-		0003
604-0	D0936M14X1,5	-00	6,000	MUTTER DIN 936 MS M14X1,5 000 STK VERNICKELT		-		0003
605-0	6 2103 0515	-00	3,500	GUMMI-KABEL HOERR-F-561,5 000 M		rubber cable		0003
610-0	6 3203 0016	-00	1,000	KNICKSCHUTZ-VERSCHRAUBUNG 000 STK PE16 153 LZ16		-		0006